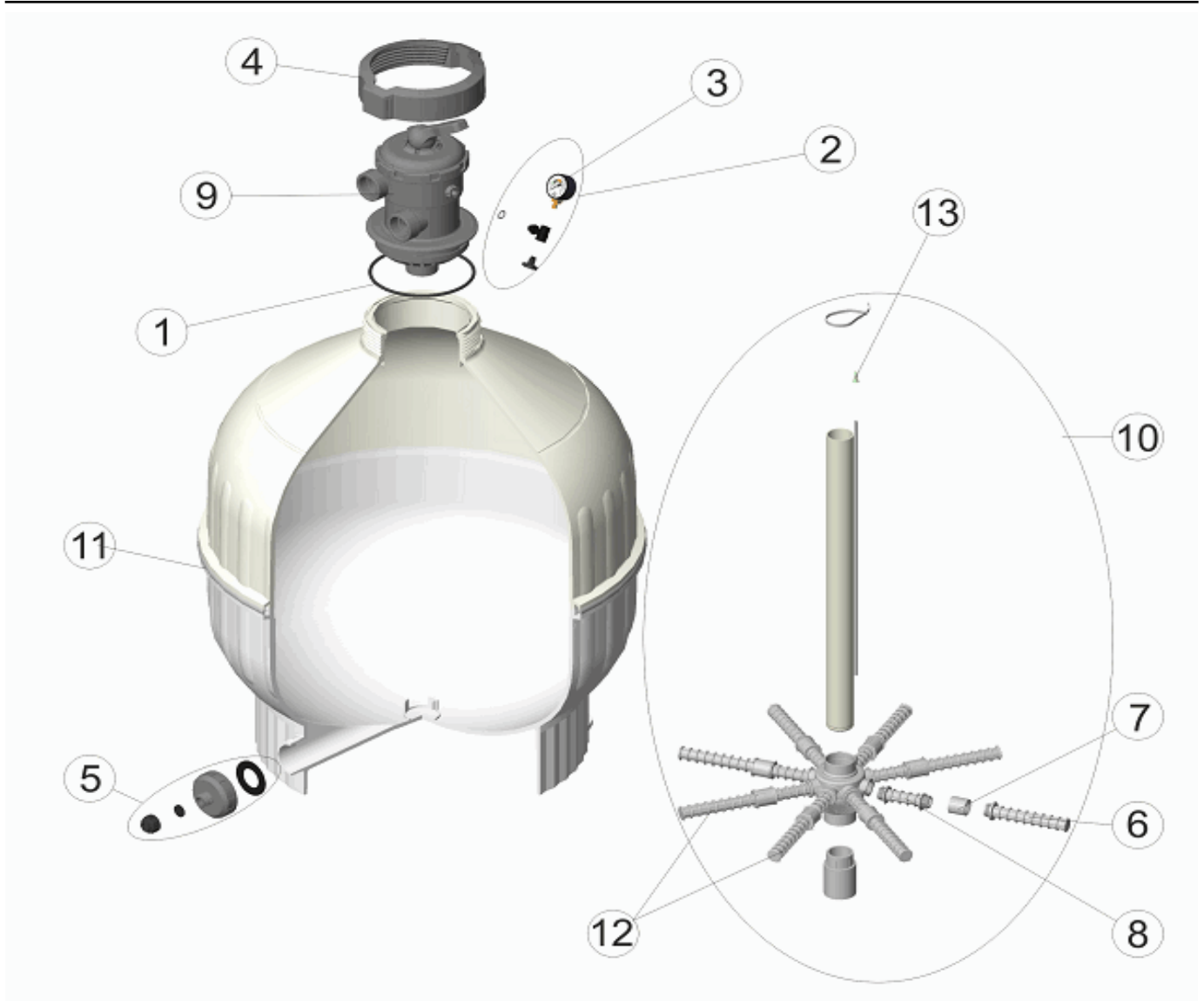


CODE **20128**

BESCHREIBUNG: **FILTER CANTABRIC TOP 750**



DEUTSCHE

POS	CODE	BESCHREIBUNG	POS	CODE	BESCHREIBUNG
1	4404180201	O-RING DECKEL CANTABRIC	8	*4404180117	"FILTERSTERN SCHLITZROHR 3/4" 100MM"
2	4404220101	MANOMETER KOMPLETT	9	4404120001	AUTOMATISCHES RÜCKSPÜLVENTIL
3	4404220102	MANOMETER 1/8" 3 KG./CM	10	4404180023	SET SAMMELROHR CANTABRIC D. 750
4	4404180204	ÜBERWURFMUTTER OFFEN	11	4404180010	PROFIL ABDECKBLENDE
5	4404180114	*ENTLEERUNG 2"	12	4404010086	SET FILTERSTERN SCHLITZROHR 3/4" D. 750
6	* 4404300120	*"FILTERSTERN SCHLITZROHR 3/4" 160MM"	13	4404040108	FILTER ENTLÜFTUNG
7	* 4404180118	*"MUFFE 3/4"***			

CODE **20128**

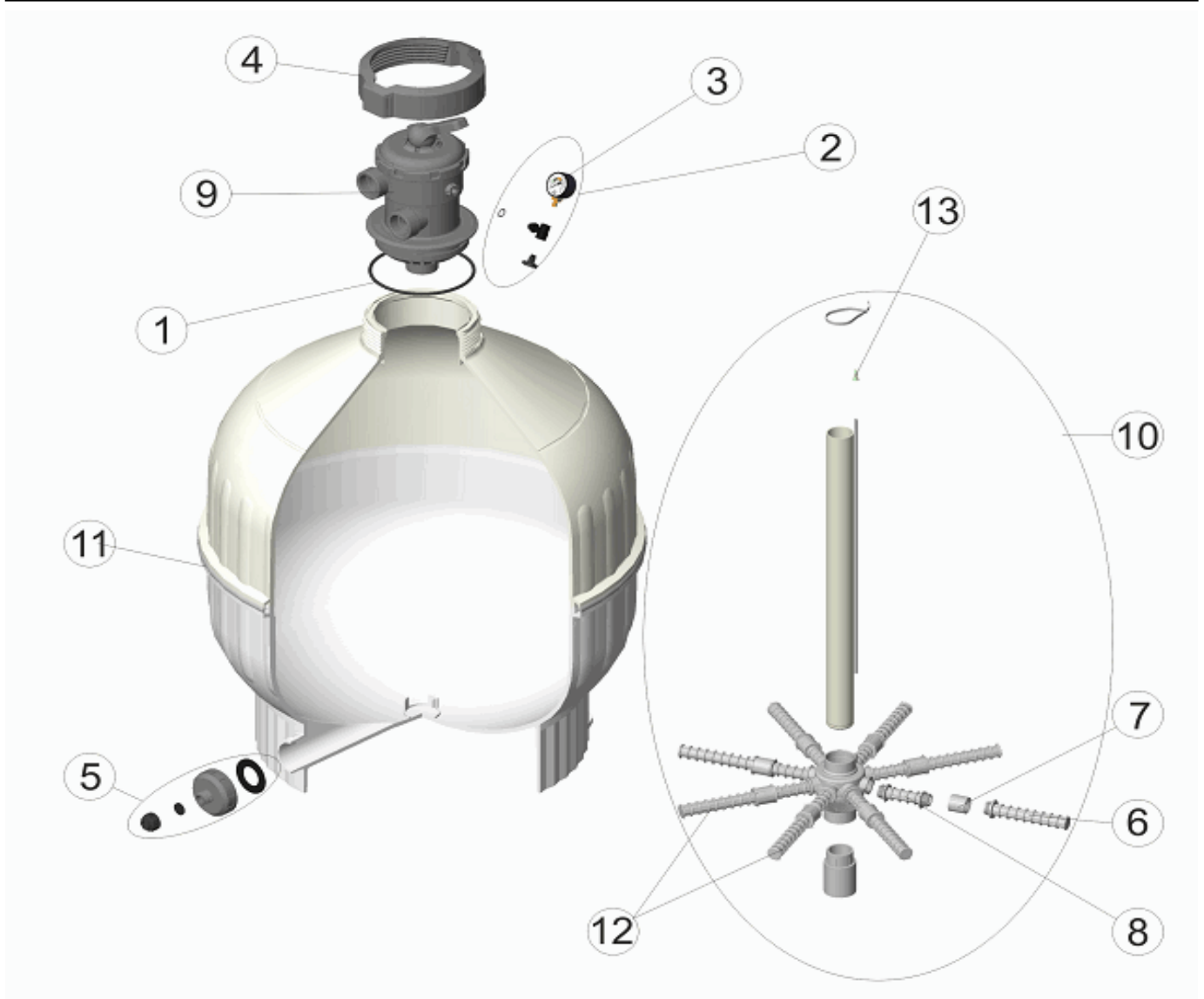
BESCHREIBUNG: **FILTER CANTABRIC TOP 750**

HINWEISE

POSICIÓN	PIEZA	OBSERVACIÓN
6	4404300120	Para (20128-6)
7	4404180118	Para (20128-3)
8	4404180117	Para (20128-3)

CODE **20128**

DESCRIPTION: **CANTABRIC TOP FILTER 750**



ENGLISH

POS	CODE	DESCRIPTION	POS	CODE	DESCRIPTION
1	4404180201	'O' RING	8	*4404180117	"MANIFOLD ARM 3/4" 100 MM"
2	4404220101	COMPLETE PRESSURE GAUGE UNIT	9	4404120001	BAYONETTE MULTIPORT VALVE
3	4404220102	PRESSURE GAUGE 1/8" 3 KG./CM	10	4404180023	COLLECTOR ASSEMBLY CANTABRIC D. 750
4	4404180204	OPEN THREADED COLLAR	11	4404180010	PROFILE FACEPLATE
5	4404180114	SAND PURGE 2"	12	4404010086	MANIFOLD ARM ASSEMBLY 3/4" D. 750
6	*4404300120	"MANIFOLD ARM 3/4" 160 MM"	13	4404040108	AIR PURGE
7	*4404180118	"UNION BUSH 3/4"			

CODE **20128**

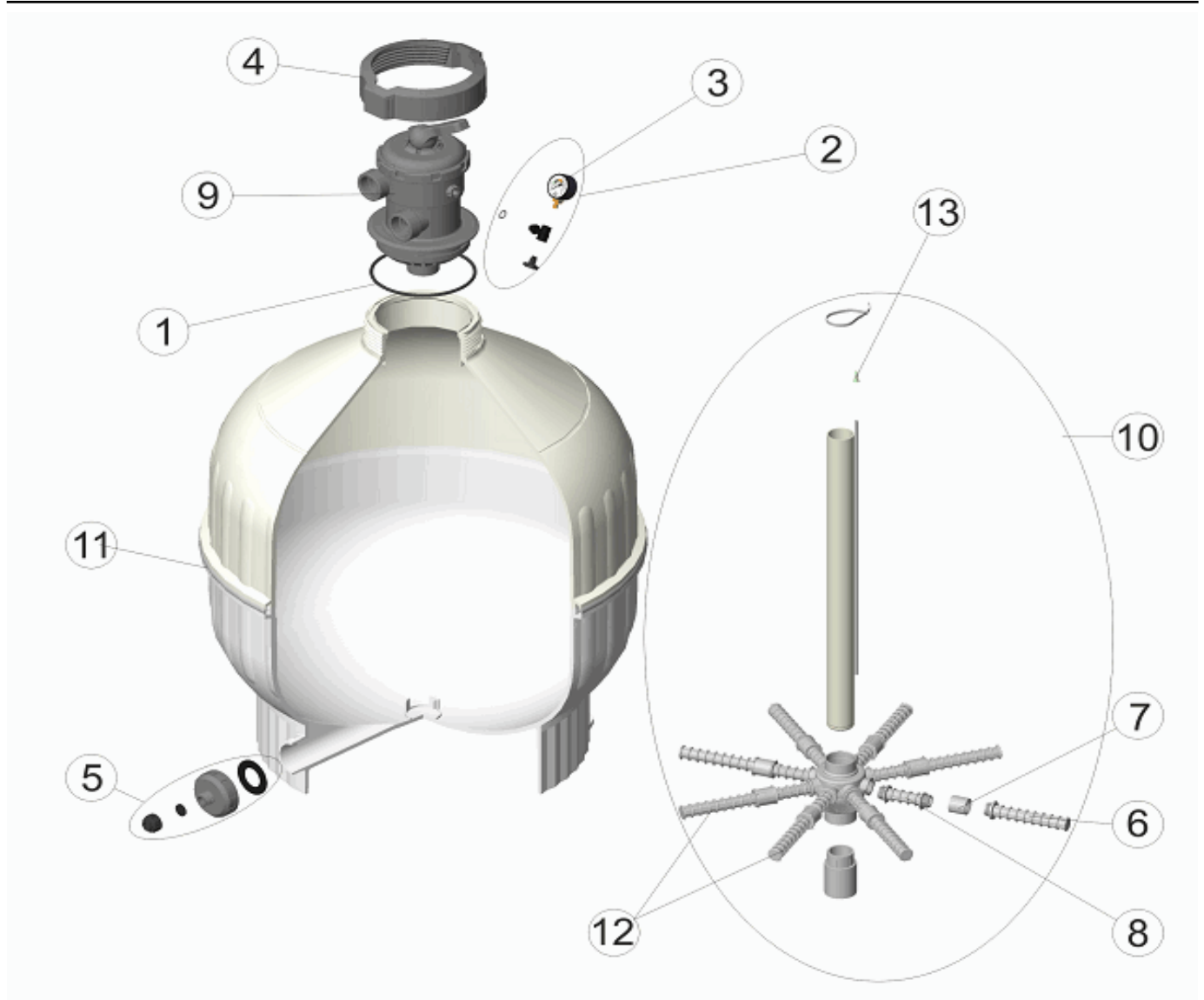
DESCRIPTION: **CANTABRIC TOP FILTER 750**

OBSERVATIONS

POSICIÓN	PIEZA	OBSERVACIÓN
6	4404300120	Para (20128-6)
7	4404180118	Para (20128-3)
8	4404180117	Para (20128-3)

CODIGO **20128**

DESCRIPCION: **FILTRO CANTABRIC TOP 750**



ESPAÑOL

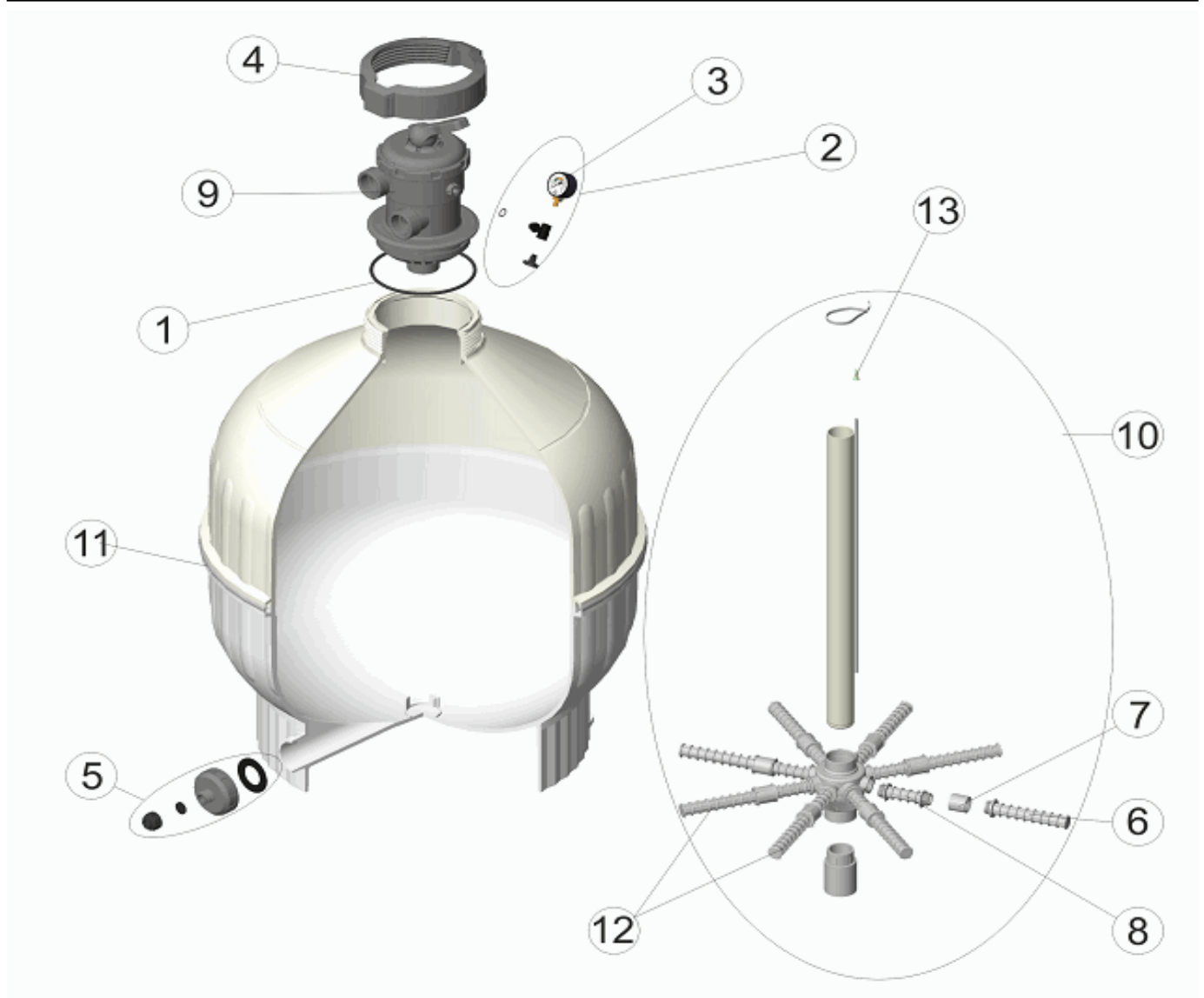
POS	CODIGO	DESCRIPCION	POS	CODIGO	DESCRIPCION
1	4404180201	JUNTA TORICA	8	*4404180117	BRAZO COLECTOR 3/4" 100 MM
2	4404220101	MANOMETRO COMPLETO	9	4404120001	VALVULA TOP NEGRA 6 VIAS BAYONETA DFC
3	4404220102	MANOMETRO 1/8" 3 KG/CM	10	4404180023	CJTO. INTERIOR CTB D. 750
4	4404180204	TAPA ROSCADA ABIERTA	11	4404180010	PERFIL EMBELLECEDOR
5	4404180114	PURGA ARENA 2"	12	4404010086	CJTO. BRAZOS COLECTOR 3/4" D. 750
6	*4404300120	BRAZO COLECTOR 3/4" 160 MM	13	4404040108	PURGA AIRE
7	*4404180118	MANGUITO ENLACE 3/4"			

CODIGO **20128**DESCRIPCION: **FILTRO CANTABRIC TOP 750****OBSERVACIONES**

POSICIÓN	PIEZA	OBSERVACIÓN
6	4404300120	Para (20128-6)
7	4404180118	Para (20128-3)
8	4404180117	Para (20128-3)

CODE **20128**

DESCRIPTION: **FILTRE CANTABRIC TOP 750**



FRANCAIS

POS	CODE	DESCRIPTION	POS	CODE	DESCRIPTION
1	4404180201	JOINT TORIQUE	8	*4404180117	"BRAS DE REPARTITEUR 3/4"" 100MM"
2	4404220101	MANOMETRE COMPLET	9	4404120001	VANNE MULTIVOIES AUTOMATIQUE
3	4404220102	MANOMETRE 1/8" 3 KG./CM	10	4404180023	ENSEMBLE INTERIEUR D. 750
4	4404180204	ECROU DE COUVERCLE	11	4404180010	ANNEAU DE PROTECTION
5	4404180114	*PURGE SABLE 2""	12	4404010086	ENSEMBLE BRAS DE REPARTITEUR 3/4"" D. 750
6	*4404300120	*"BRAS DE REPARTITEUR 3/4"" 160MM"	13	4404040108	PURGE D'AIR
7	*4404180118	*"MANCHON 3/4""			

CODE **20128**

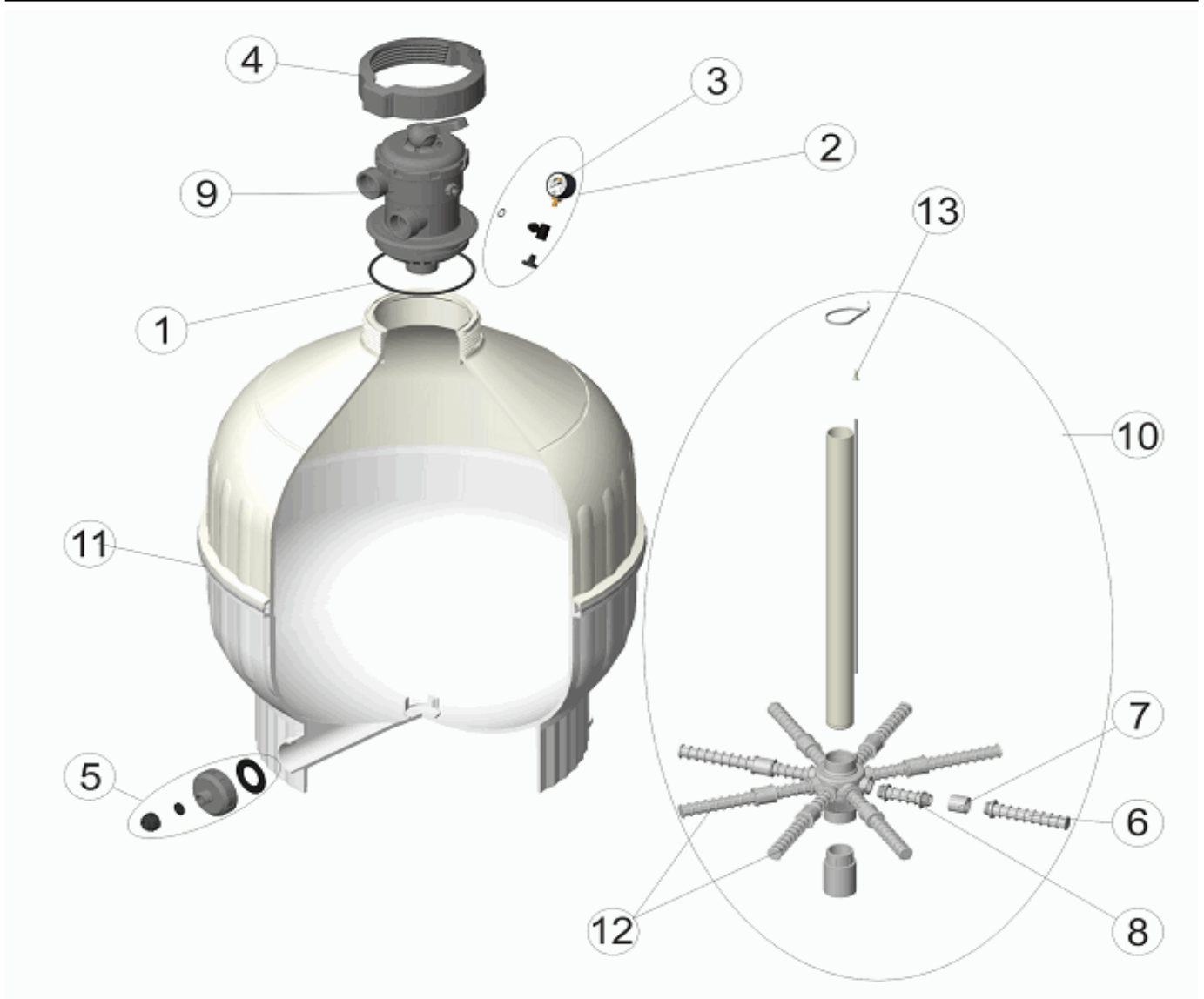
DESCRIPTION: **FILTRE CANTABRIC TOP 750**

OBSERVATIONS

POSICIÓN	PIEZA	OBSERVACIÓN
6	4404300120	Para (20128-6)
7	4404180118	Para (20128-3)
8	4404180117	Para (20128-3)

CODICE **20128**

DESCRIZIONE: **FILTRO CANTABRIC TOP 750**



ITALIANO

POS	CODICE	DESCRIZIONE	POS	CODICE	DESCRIZIONE
1	4404180201	O-RING	8	*4404180117	"CANDELOTTO COLLECTORE 3/4" 100MM"
2	4404220101	MANOMETRO COMPLETO	9	4404120001	VALVOLA TOP NERAA BAIONETTA 6 VIE
3	4404220102	MANOMETRO 1/8" 3 KG./CM	10	4404180023	KIT COLLETTORE CANTABRIC D. 750
4	4404180204	GHIERA COPERCHIO	11	4404180010	PROFILO FLANGIA
5	4404180114	SCARICO SABBIA 2"	12	4404010086	GRUPPO CANDELOTTO COLLECTORE 3/4" D. 750
6	* 4404300120	"CANDELOTTO COLLECTORE 3/4" 160MM"	13	4404040108	SFIATO ARIA
7	* 4404180118	"MANICOTTO DA 1" 3/4"			

CODICE **20128**

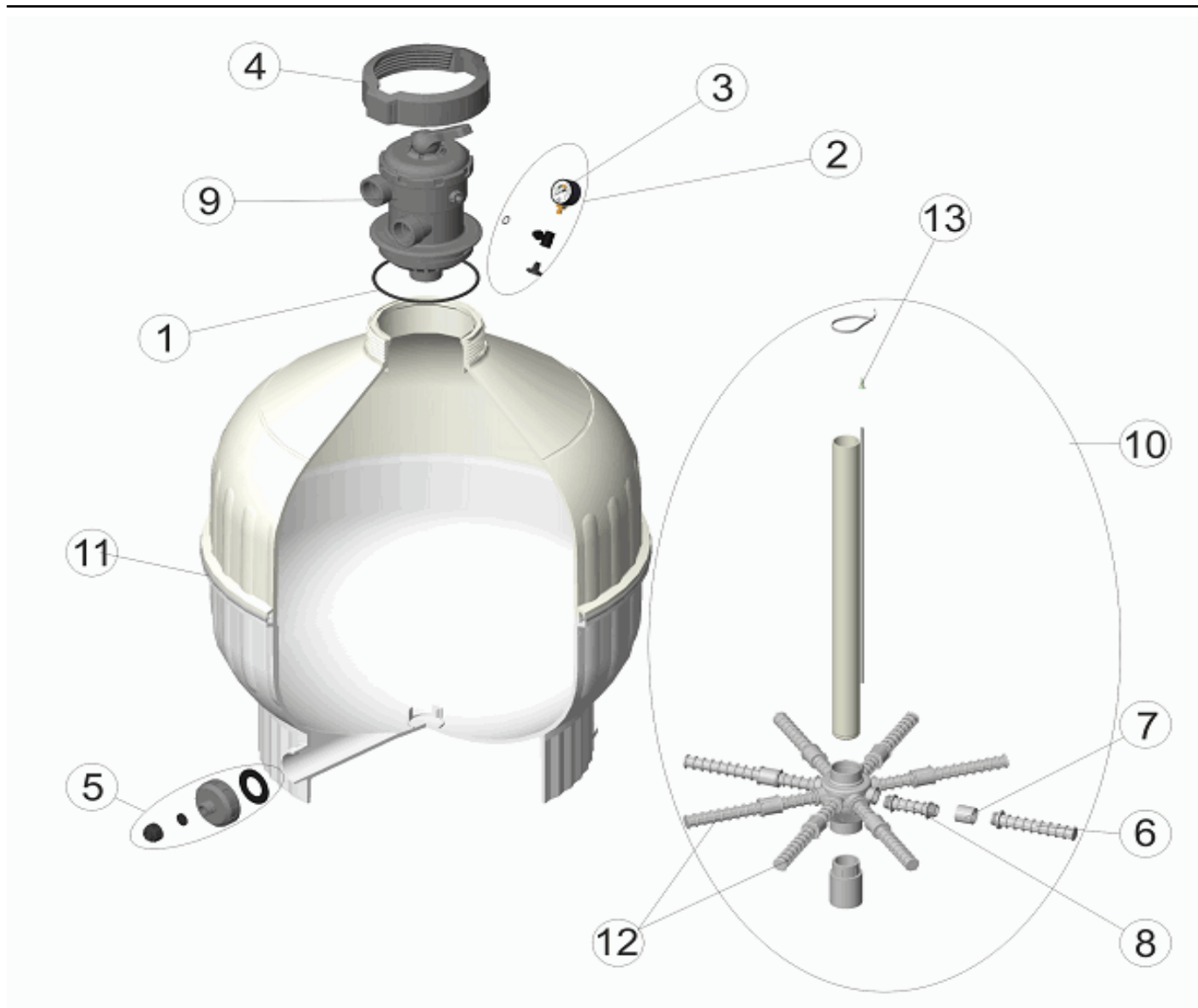
DESCRIZIONE: **FILTRO CANTABRIC TOP 750**

OSSERVAZIONI

POSICIÓN	PIEZA	OBSERVACIÓN
6	4404300120	Para (20128-6)
7	4404180118	Para (20128-3)
8	4404180117	Para (20128-3)

CODIGO **20128**

DESCRIÇÃO: **FILTRO CANTABRIC TOP 750**



PORTUGUES

POS	CODIGO	DESCRIÇÃO	POS	CODIGO	DESCRIÇÃO
1	4404180201	JUNTA TÓRICA	8	*4404180117	"BRAÇO COLECTOR 3/4" 100MM"
2	4404220101	MANÓMETRO COMPLETO	9	4404120001	VALVULA SELECTORA TOP 6 VIAS
3	4404220102	MANOMETRO 1/8" 3 KG./CM	10	4404180023	CONJUNTO COLECTOR CANTABRIC D. 750
4	4404180204	TAMPA ROSCADA ABERTA	11	4404180010	PERFIL EMBELEZADOR
5	4404180114	PURGA AREIA 2"	12	4404010086	CJTO. BRAÇO COLECTOR 3/4" D. 750
6	* 4404300120	"BRAÇO COLECTOR 3/4" 160MM"	13	4404040108	PURGA AREIA
7	* 4404180118	"MANGUITO UNIÃO 3/4"			

CODIGO **20128**

DESCRIÇÃO: **FILTRO CANTABRIC TOP 750**

OBSERVAÇÕES

POSICIÓN	PIEZA	OBSERVACIÓN
6	4404300120	Para (20128-6)
7	4404180118	Para (20128-3)
8	4404180117	Para (20128-3)